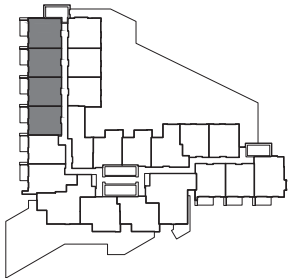




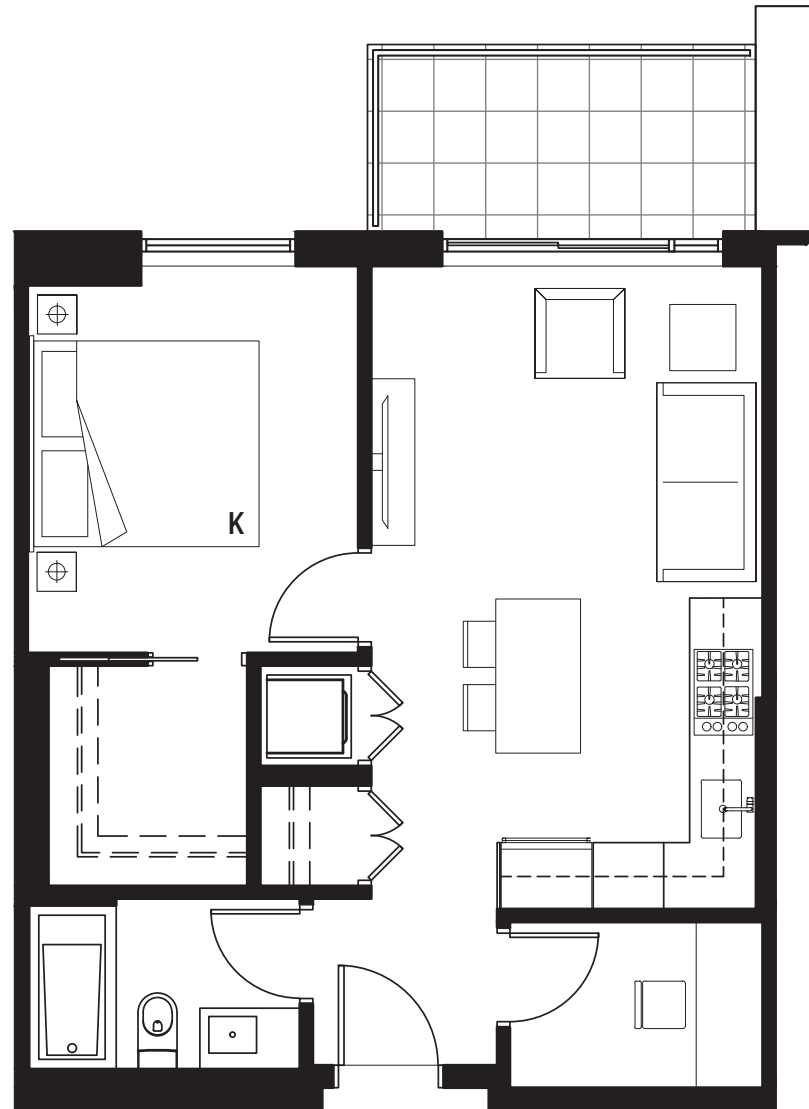
COMPASS

SUITE PS-A

1 BEDROOM + DEN
602 SQ FT - 626 SQ FT
PARK VIEWS



LEVELS 3 - 4



SELYNN
VILLAGE

These materials are based upon architectural drawings, which can be expected to vary from the proposed and final strata plans prepared by a land surveyor and used to determine matters such as unit entitlement under the Strata Property Act. These materials are used for general illustrative purposes only. Refer to the Disclosure Statement for the proposed strata plan.

SELYNN.CA