

WINDSOR  
 TOTAL AREA: 2982 FT.<sup>2</sup>  
 (INCLUDING UNFINISHED BASEMENT)

PRELIMINARY

# BRIDLE RIDGE

PANORAMIC SINGLE FAMILY HOMES



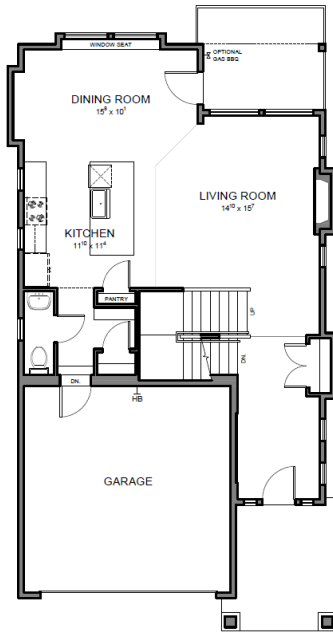
WINDSOR 'A'



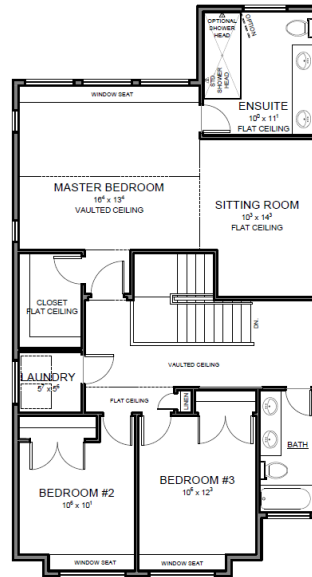
WINDSOR 'B'



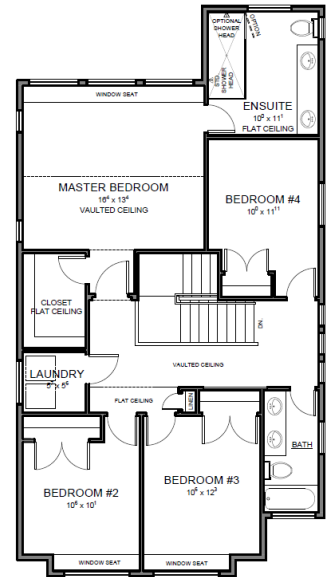
WINDSOR 'C'



MAIN FLOOR PLAN  
 916 FT.<sup>2</sup>

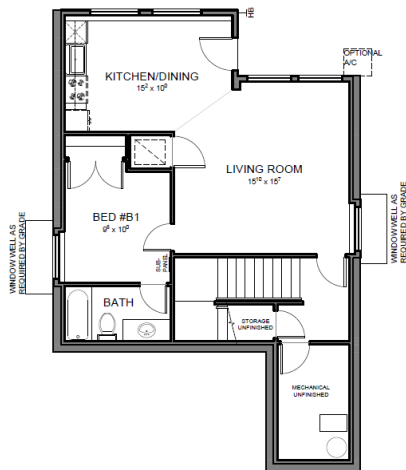


UPPER FLOOR PLAN - SITTING ROOM  
 1180 FT.<sup>2</sup>

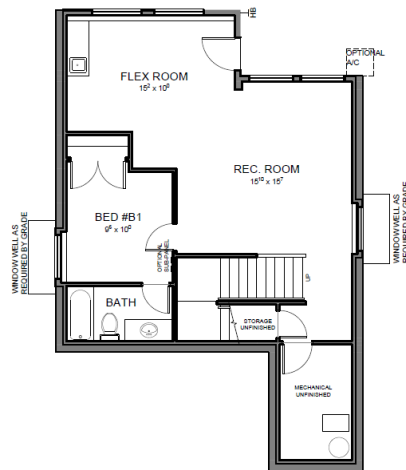


UPPER FLOOR PLAN - 4 BEDROOM  
 1180 FT.<sup>2</sup>

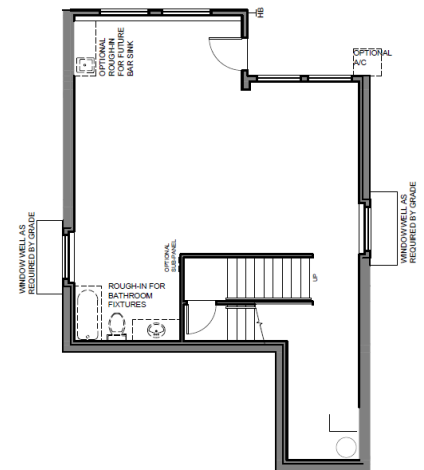
PRELIMINARY



BASEMENT PLAN - TRU/SUITE  
 SUITE AREA: 650 FT.<sup>2</sup>  
 TOTAL FLOOR AREA: 877 FT.<sup>2</sup>



BASEMENT PLAN - DELUXE FINISHED  
 886 FT.<sup>2</sup>



BASEMENT PLAN - UNFINISHED  
 886 FT.<sup>2</sup>

THE PURCHASER IS ADVISED THAT THESE PLANS AND OR ELEVATIONS ARE SUBJECT TO CHANGE AT THE SOLE DISCRETION OF MORNINGSTAR HOMES LTD. PENDING CONVERSION TO PROPER WORKING DRAWINGS/CONSTRUCTION DOCUMENTS. SPECIFIC ROOM DIMENSIONS, FLOOR AREAS, AND OR INDIVIDUAL FEATURES/ELEMENTS MAY ALSO BE SUBJECT TO CHANGE AT THE SOLE DISCRETION OF MORNINGSTAR HOMES LTD. MORNINGSTAR HOMES LTD. RESERVES THE RIGHT TO MODIFY AND ORE AFFECT CHANGES TO MEET REQUIREMENTS OF THE CITY OF MAPLE RIDGE, CONFORM TO APPLICABLE CITY OF MAPLE RIDGE BY-LAWS, REGISTERED DESIGN GUIDELINES, COVENANTS AND THE BC BUILDING CODE. E.&O.E.