

CARLTON
 TOTAL AREA: 3243 FT.²
 (INCLUDING UNFINISHED BASEMENT)
PRELIMINARY

BRIDLE RIDGE
 PANORAMIC SINGLE FAMILY HOMES



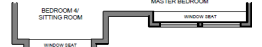
CARLTON 'A'



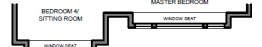
CARLTON 'B'



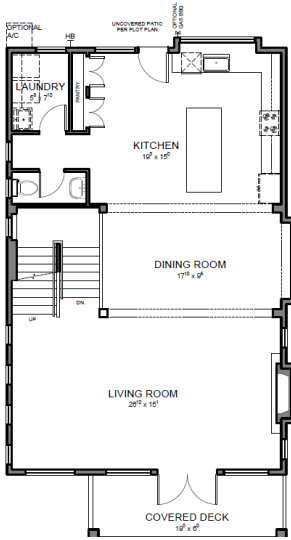
CARLTON 'C'



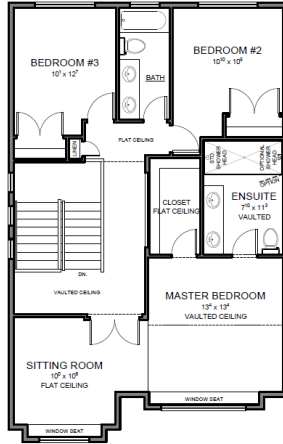
CARLTON 'B' - UPPER FLOOR



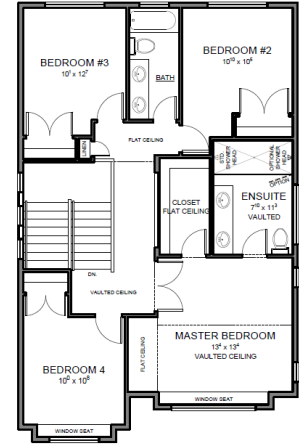
CARLTON 'C' - UPPER FLOOR



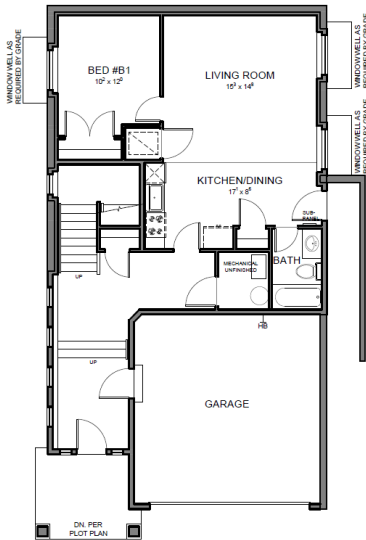
MAIN FLOOR PLAN
 1210 FT.²



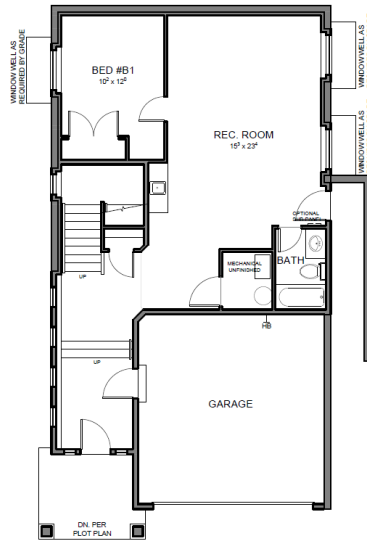
UPPER FLOOR PLAN - SITTING ROOM
 1046 FT.²
 BASED ON CARLTON 'A'



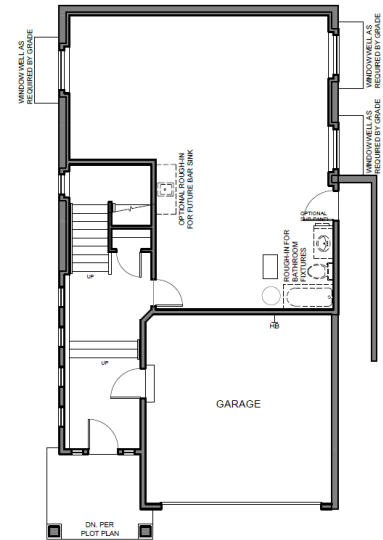
UPPER FLOOR PLAN - 4 BEDROOM
 1046 FT.²
 BASED ON CARLTON 'A'



BASEMENT PLAN - TRU/SUITE
 SUITE AREA: 632 FT.²
 TOTAL FLOOR AREA: 987 FT.²



BASEMENT PLAN - DELUXE FINISHED
 987 FT.²



BASEMENT PLAN - UNFINISHED
 987 FT.²

THE PURCHASER IS ADVISED THAT THESE PLANS AND OR ELEVATIONS ARE SUBJECT TO CHANGE AT THE SOLE DISCRETION OF MORNINGSTAR HOMES LTD. PENDING CONVERSION TO PROPER WORKING DRAWINGS/CONSTRUCTION DOCUMENTS. SPECIFIC ROOM DIMENSIONS, FLOOR AREAS, AND OR INDIVIDUAL FEATURES/ELEMENTS MAY ALSO BE SUBJECT TO CHANGE AT THE SOLE DISCRETION OF MORNINGSTAR HOMES LTD. MORNINGSTAR HOMES LTD. RESERVES THE RIGHT TO MODIFY AND ORE AFFECT CHANGES TO MEET REQUIREMENTS OF THE CITY OF MAPLE RIDGE, CONFORM TO APPLICABLE CITY OF MAPLE RIDGE BY-LAWS, REGISTERED DESIGN GUIDELINES, COVENANTS AND THE BC BUILDING CODE. E.&O.E.