

WESTCHESTER  
TOTAL AREA: 3188 FT.<sup>2</sup>  
(INCLUDING UNFINISHED BASEMENT)

PRELIMINARY

# BRIDLE RIDGE

PANORAMIC SINGLE FAMILY HOMES



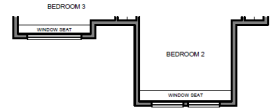
WESTCHESTER 'A'



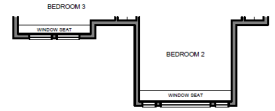
WESTCHESTER 'B'



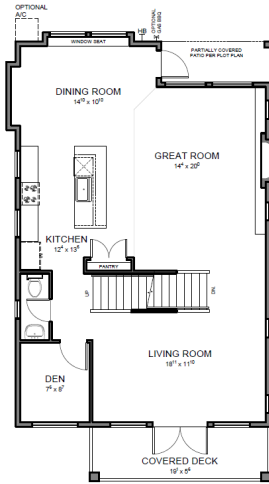
WESTCHESTER 'C'



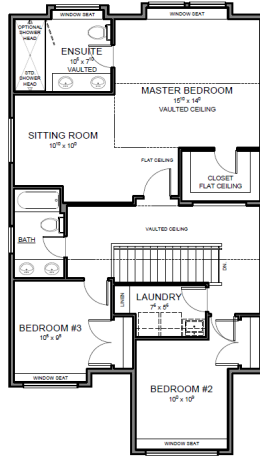
WESTCHESTER 'B' - UPPER FLOOR



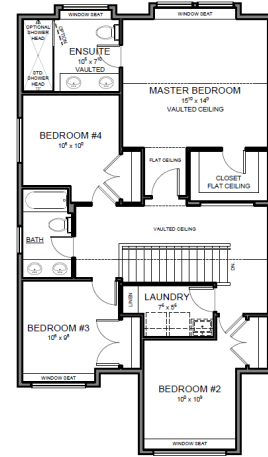
WESTCHESTER 'C' - UPPER FLOOR



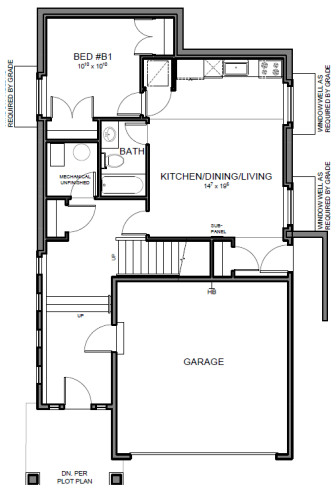
MAIN FLOOR PLAN  
1142 FT.<sup>2</sup>



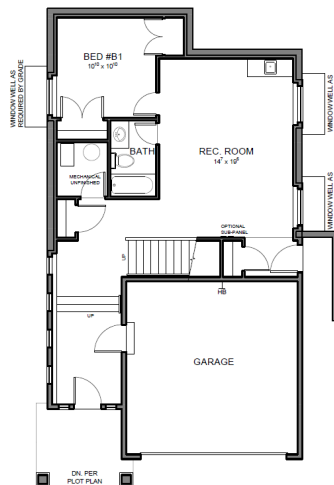
UPPER FLOOR PLAN - SITTING ROOM  
1141 FT.<sup>2</sup>  
BASED ON WESTCHESTER 'K' ELEVATION



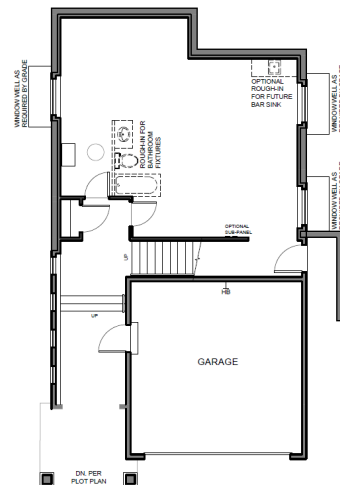
UPPER FLOOR PLAN - 4 BEDROOM  
1141 FT.<sup>2</sup>  
BASED ON WESTCHESTER 'M' ELEVATION



BASEMENT PLAN - TRU/SUITE  
SUITE AREA: 592 FT.<sup>2</sup>  
TOTAL FLOOR AREA: 905 FT.<sup>2</sup>



BASEMENT PLAN - DELUXE FINISHED  
905 FT.<sup>2</sup>



BASEMENT PLAN - UNFINISHED  
905 FT.<sup>2</sup>

THE PURCHASER IS ADVISED THAT THESE PLANS AND OR ELEVATIONS ARE SUBJECT TO CHANGE AT THE SOLE DISCRETION OF MORNINGSTAR HOMES LTD. PENDING CONVERSION TO PROPER WORKING DRAWINGS/CONSTRUCTION DOCUMENTS. SPECIFIC ROOM DIMENSIONS, FLOOR AREAS, AND OR INDIVIDUAL FEATURES/ELEMENTS MAY ALSO BE SUBJECT TO CHANGE AT THE SOLE DISCRETION OF MORNINGSTAR HOMES LTD. MORNINGSTAR HOMES LTD. RESERVES THE RIGHT TO MODIFY AND ORE AFFECT CHANGES TO MEET REQUIREMENTS OF THE CITY OF MAPLE RIDGE, CONFORM TO APPLICABLE CITY OF MAPLE RIDGE BY-LAWS, REGISTERED DESIGN GUIDELINES, COVENANTS AND THE BC BUILDING CODE. E.&O.E.