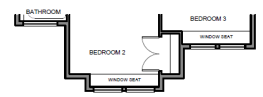


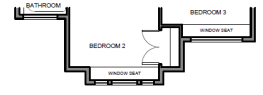
MAYFIELD
 TOTAL AREA: 2977 FT.²
 (INCLUDING UNFINISHED BASEMENT)

PRELIMINARY

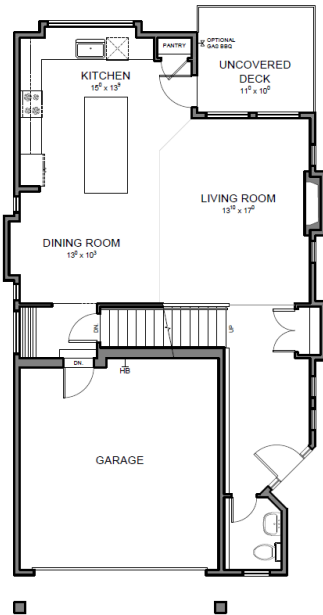
BRIDLE RIDGE
 PANORAMIC SINGLE FAMILY HOMES



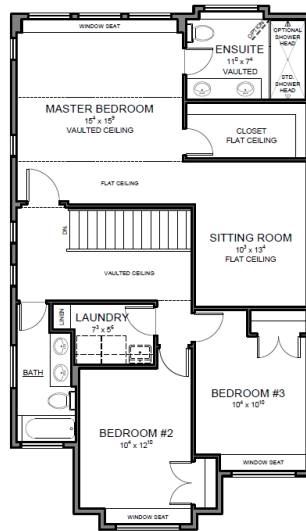
MAYFIELD 'B' - UPPER FLOOR



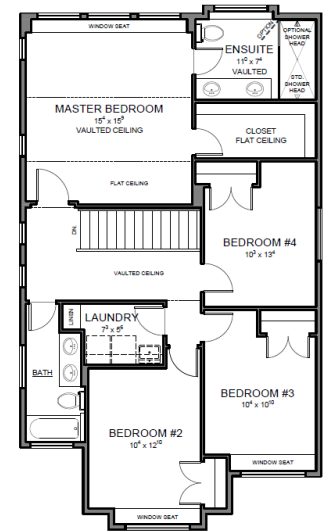
MAYFIELD 'C' - UPPER FLOOR



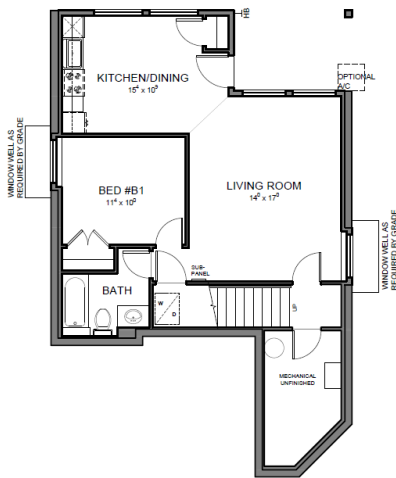
MAIN FLOOR PLAN
 940 FT.²



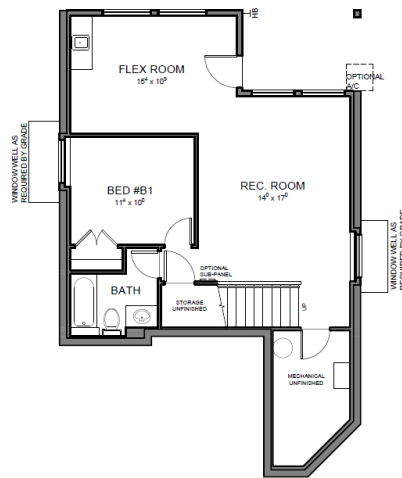
UPPER FLOOR PLAN - SITTING ROOM
 1160 FT.²
 BASED ON MAYFIELD 'A' ELEVATION



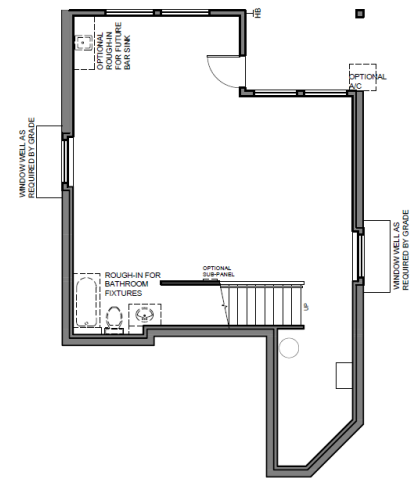
UPPER FLOOR PLAN - 4 BEDROOM
 1160 FT.²
 BASED ON MAYFIELD 'A' ELEVATION



BASEMENT PLAN - TRU/SUITE
 SUITE AREA: 707 FT.²
 TOTAL FLOOR AREA: 877 FT.²



BASEMENT PLAN - DELUXE FINISHED
 877 FT.²



BASEMENT PLAN - UNFINISHED
 877 FT.²

THE PURCHASER IS ADVISED THAT THESE PLANS AND OR ELEVATIONS ARE SUBJECT TO CHANGE AT THE SOLE DISCRETION OF MORNINGSTAR HOMES LTD. PENDING CONVERSION TO PROPER WORKING DRAWINGS/CONSTRUCTION DOCUMENTS. SPECIFIC ROOM DIMENSIONS, FLOOR AREAS, AND OR INDIVIDUAL FEATURES/ELEMENTS MAY ALSO BE SUBJECT TO CHANGE AT THE SOLE DISCRETION OF MORNINGSTAR HOMES LTD. MORNINGSTAR HOMES LTD. RESERVES THE RIGHT TO MODIFY AND ORE AFFECT CHANGES TO MEET REQUIREMENTS OF THE CITY OF MAPLE RIDGE, CONFORM TO APPLICABLE CITY OF MAPLE RIDGE BY-LAWS, REGISTERED DESIGN GUIDELINES, COVENANTS AND THE BC BUILDING CODE. E.&O.E.