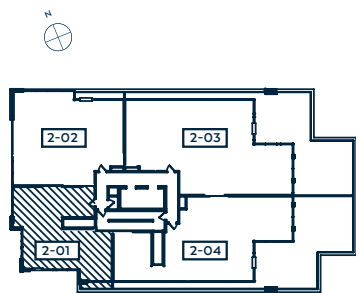
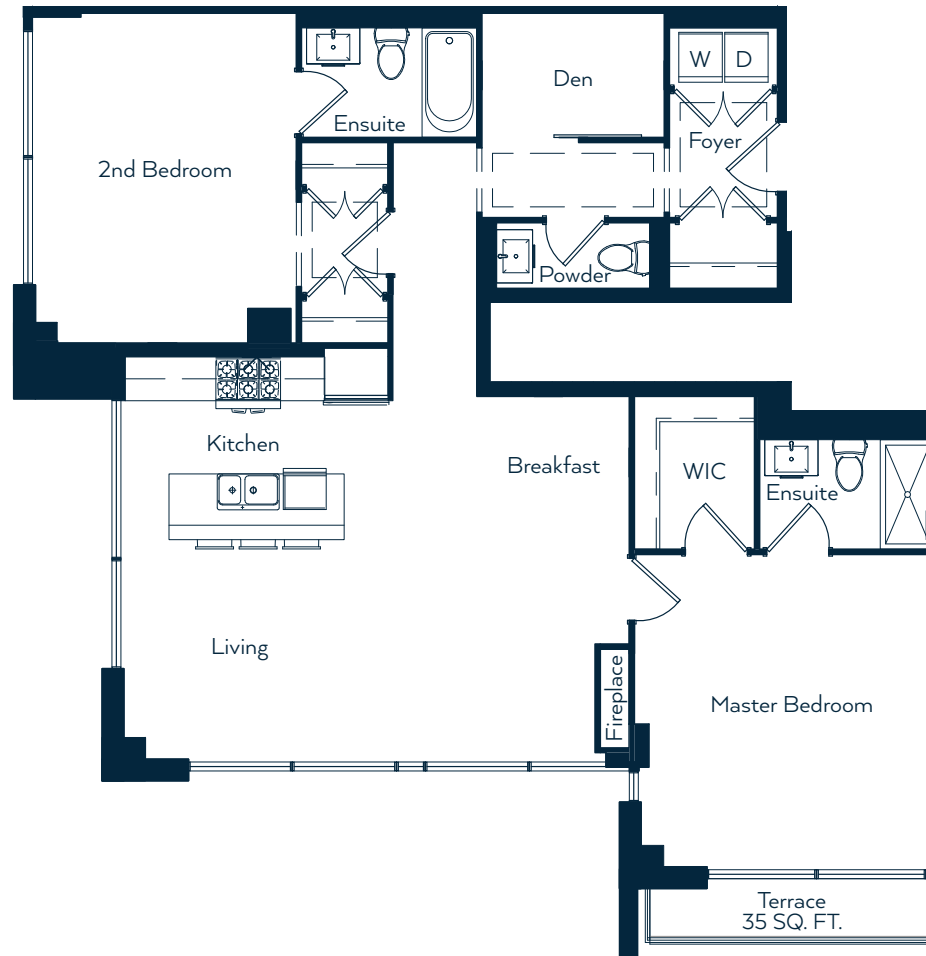


# THE ST. HELENA

At the heart of Napa Valley lies the town of St. Helena. Known affectionately as Napa Valley's Main Street, St. Helena brings all the region's pleasures together in one location. Gather with family and friends in The St. Helena suite's spacious living room. Enjoy spectacular views from your very own south-facing terrace. Live the life you want in The St. Helena.



**2 BEDROOM / DEN / 2.5 BATHROOM**  
**1,271 SQ. FT. + TERRACE - 35 SQ. FT.**

Living	23' 2" x 10' 9"
Kitchen	12' 0" x 7' 8"
Breakfast	7' 0" x 6' 6"
Master	13' 8" x 14' 5"
2nd Bedroom	12' 0" x 15' 1"
Den	8' 4" x 5' 8"

Disclaimer: All dimensions are approximate. Actual usable floor plan space may differ from stated area in accordance with Bulletin 22 published by the Tarion Warranty Corporation. E. & O. E.