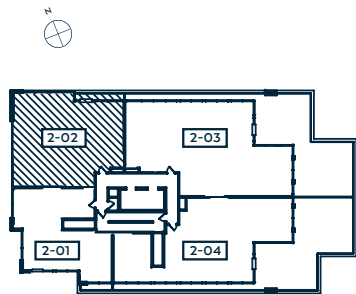
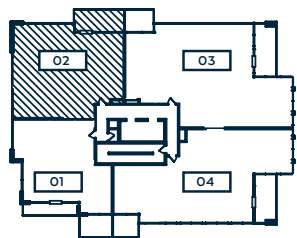


THE TAPLIN

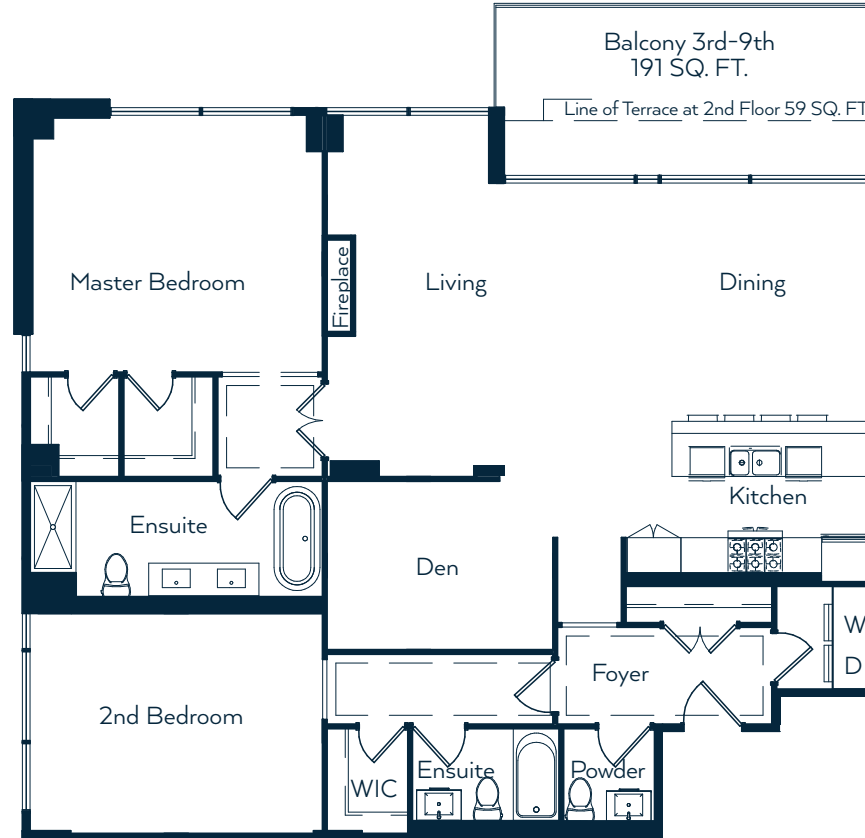
Taplin Road is the physical manifestation of the road less travelled. Meandering between the Silverado Trail and Spring Valley, Taplin Road was built with the freedom-seeker in mind. The Taplin suite at The Insignia, combines the same independent streak embodied by its Northern California namesake with a refined urban experience – the hallmark of The Insignia Private Residences. Live in this incredible northwest-facing suite and soak up the spirit of Northern California from the comfort of your own home.



FLOOR 2 / UNIT 2-02



FLOORS 3-7 / UNITS 3-02, 4-02, 5-02, 6-02, 7-02



2 BEDROOM / DEN / 2.5 BATHROOM
1,706 SQ. FT. + BALCONY - 191 SQ. FT.

Living	16' 4" x 19' 8"
Kitchen	13' 6" x 7' 8"
Dining	13' 7" x 13' 7"
Master	15' 9" x 14' 0"
2nd Bedroom	15' 11" x 12' 0"
Den	12' 4" x 9' 2"

Disclaimer: All dimensions are approximate. Actual usable floor plan space may differ from stated area in accordance with Bulletin 22 published by the Tarion Warranty Corporation. E. & O. E.