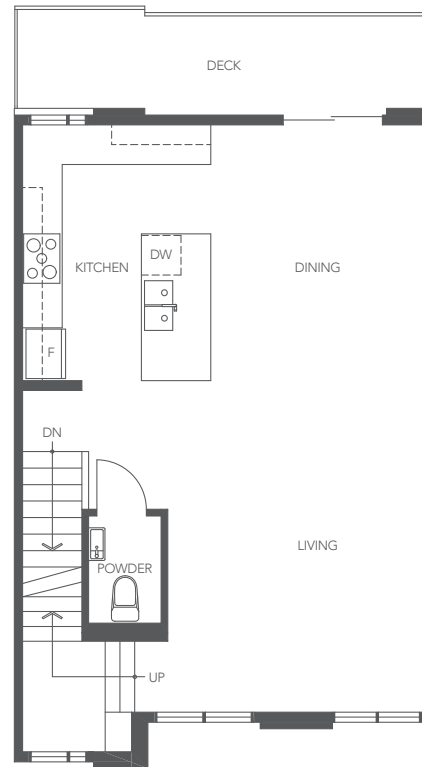
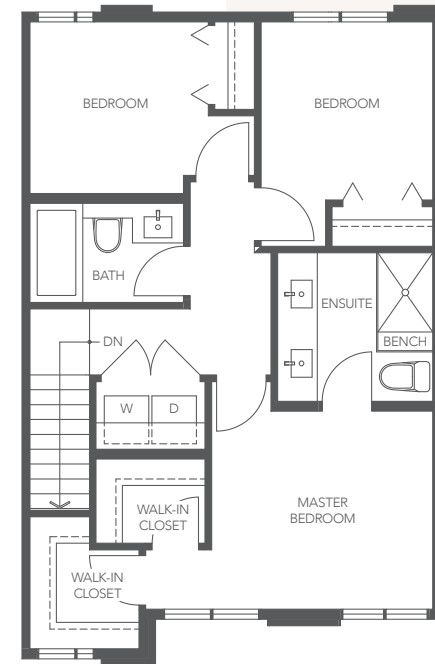


LOWER



MAIN



UPPER

PLAN G1

GARDENER SERIES

3 BEDROOM + DEN

2.5 BATHROOM

APPROX. 1,455 – 1,476 SQ. FT.

THE DEVELOPER RESERVES THE RIGHT TO MAKE MODIFICATIONS OR SUBSTITUTIONS SHOULD THEY BE NECESSARY. ANY MEASUREMENTS PROVIDED ARE APPROXIMATE ONLY. THE QUALITY RESIDENCES AT TOWNSEND ARE BUILT BY POLYGON TOWNSEND HOMES LTD.

05/07/20