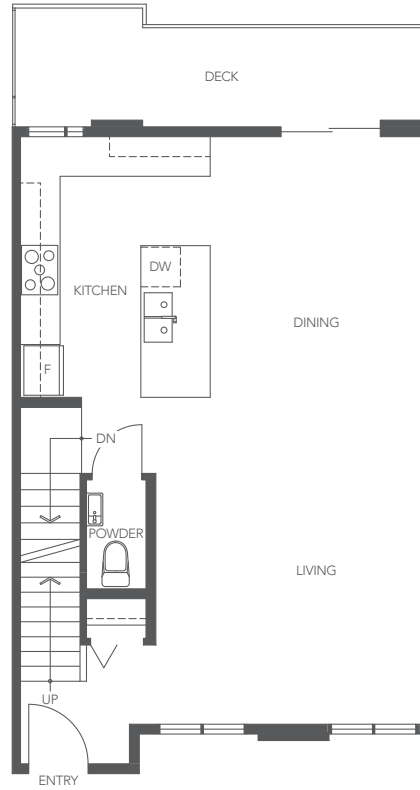
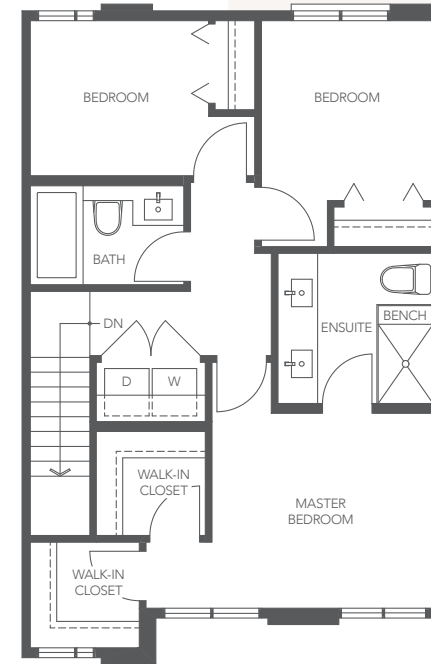


LOWER



MAIN



UPPER

# PLAN F1

PARK SERIES

3 BEDROOM + DEN  
2.5 BATHROOM  
APPROX. 1,468 SQ. FT.

THE DEVELOPER RESERVES THE RIGHT TO MAKE MODIFICATIONS OR SUBSTITUTIONS SHOULD THEY BE NECESSARY. ANY MEASUREMENTS PROVIDED ARE APPROXIMATE ONLY. THE QUALITY RESIDENCES AT TOWNSEND ARE BUILT BY POLYGON TOWNSEND HOMES LTD.

05/07/20